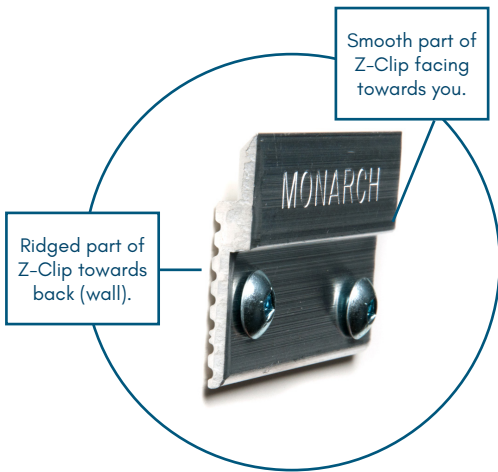


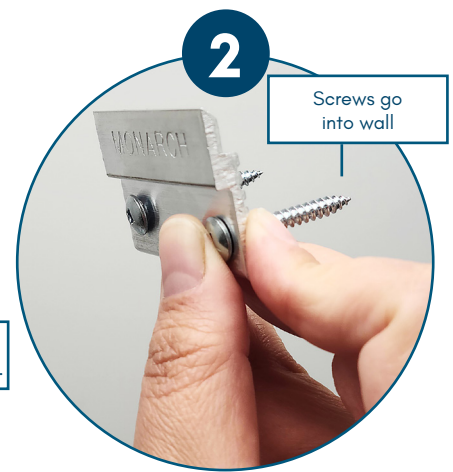
Z-CLIP INSTALL



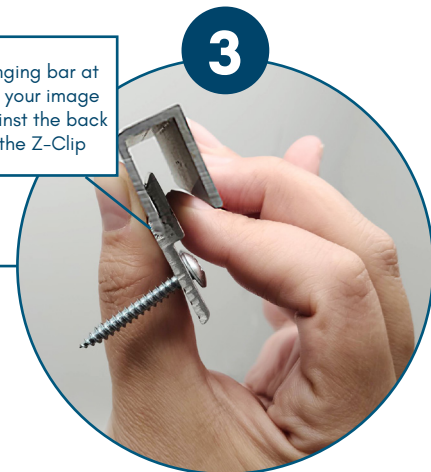
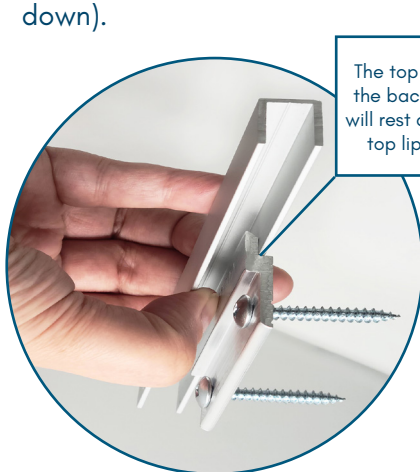
You will be provided the appropriate amount of Monarch Z Clip(s) along with 2 screws per clip. The ridged part of product faces the back (wall). The Screw holes face the bottom. The lip should be facing up. (Sometimes the Monarch writing will appear upside down).



Align the top of the Z-Clip(s) to match in height the top of the hanging bar on the back of your product once you've determined your image's wall placement. (Pencil marking recommended)



Once you've decided on the wall placement for your Z-Clip(s), use both screws to attach Z-Clip(s) into wall. If you have one Z-Clip, align it to the center-back of your image. If you have multiple Z-Clips, distribute them evenly along the back. *When hanging side is 24" or larger, you will need to use 2 Z-Clips.



After your Z-Clip(s) is attached to the wall, you will now rest your image along the wall, allowing for the back hanging bar to rest upon the upper lip of the Z-Clip (shown above).