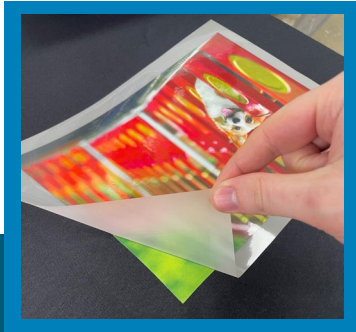
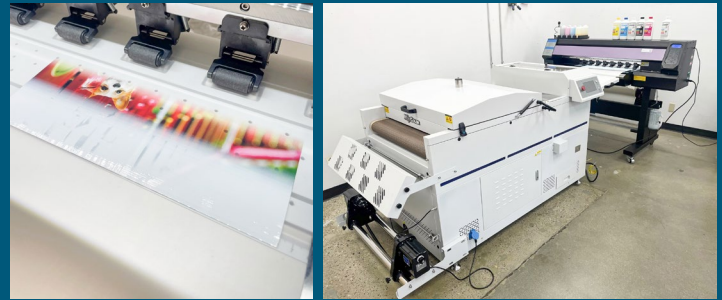


DIRECT-TO-FILM HEAT TRANSFERS



Direct-to film or DTF is a method of transferring designs onto various materials.

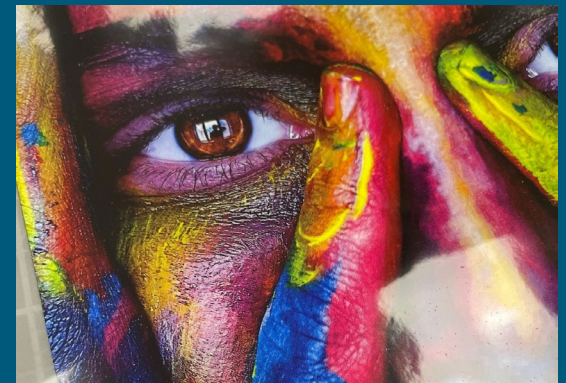
This is done by printing onto a special film, coating the print in an adhesive powder, then heating that powder getting it ready for the press.



Direct-to-film offers some big benefits over other heat transfer applications, like not having to weed out tiny lettering with vinyl or capturing more detail than with DTG. DTF also uses a white ink base to help prevent the colour of the garment from interfering with the artwork.

Other benefits of Direct-to-film:

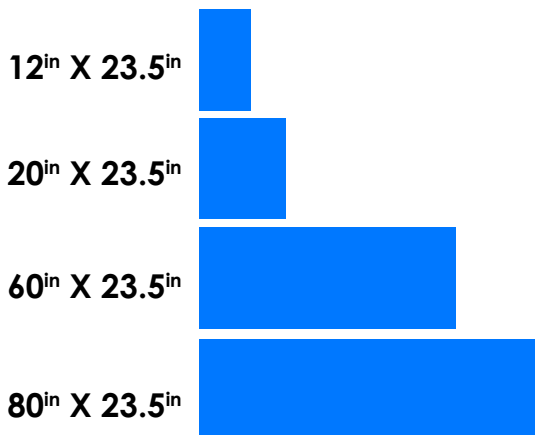
- Excellent colour accuracy
- Exceptional detail
- Durable
- Versatile- can press onto multiple fabrics



A close-up example of our direct-to-film transfers.

Size/Sku	Price
Transfer 12x23.5	\$16.95
Transfer 20x23.5	\$28.20
Transfer 60x23.5	\$84.60
Transfer 80x23.5	\$112.80

Size of Sheets



Ordering tips

Preferred file type is AI or a vector file for logos for best results

Image files should be PNG with a transparent background. Having a background can yield poor results if it must be removed.

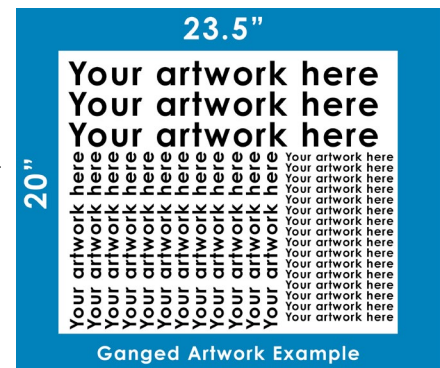
Make sure you have a high enough resolution for larger transfers. For example our 10inch full front/back ideally would be 3000pixels on the longest edge and 300 DPI.

If emailing artwork

Let us know the size needed on the longest edge and the quantity of the artwork needed, and we will do our best to fit it onto the smallest size of sheet.

If ganging artwork

Ganging artwork means consolidating all artwork into a single image with a transparent background. This option is best if you have multiple sizes of different artworks. Just make sure each artwork is sized to your needs. If you need a 60in sheet, you can gang a 20in sheet only and then we can print it three times.



Heat Press Instructions

PRE-PRESS FOR 3 SECONDS FOR SHIRTS
5 SECONDS FOR HOODIES

**HOODIES ARE THICKER AND HAVE EXTRA
MOISTURE IN THEM (ESPECIALLY SOME BLENDS)*

*AFTER PRESSING IF ITS A DARKER COLOUR, THAT'S THE MOISTURE**

**100% POLYESTER
(THIN MATERIAL)**

275^F 4-6P 10 SEC

**100% POLYESTER
50/50 BLENDS**

275^F 4-6P 15 SEC

100% COTTON

320^F 4-6P 20 SEC

PEEL AND RE-PRESS FOR 5 SECONDS

USE IRON TO BLEND ANY SCORCH MARKS (MOST COMMON ON 100% POLY).
MOVE IN A FORWARD/BACK MOTION WITH LOW-MED HEAT.

Waterproof/100%poly jackets

275^F 3P 3 SECONDS
RE-PRESS FOR 3 SECONDS

If pressed for too long, glue will leak out the edges of the jacket due to the smoothness of the material