

# Installing your display

Layout 199



Your order includes pictures, grid paper, pegs, painter's tape and foam spacers (if needed).



If the wall is hard plaster and you can't push-in the peg, you need to drill pilot holes.



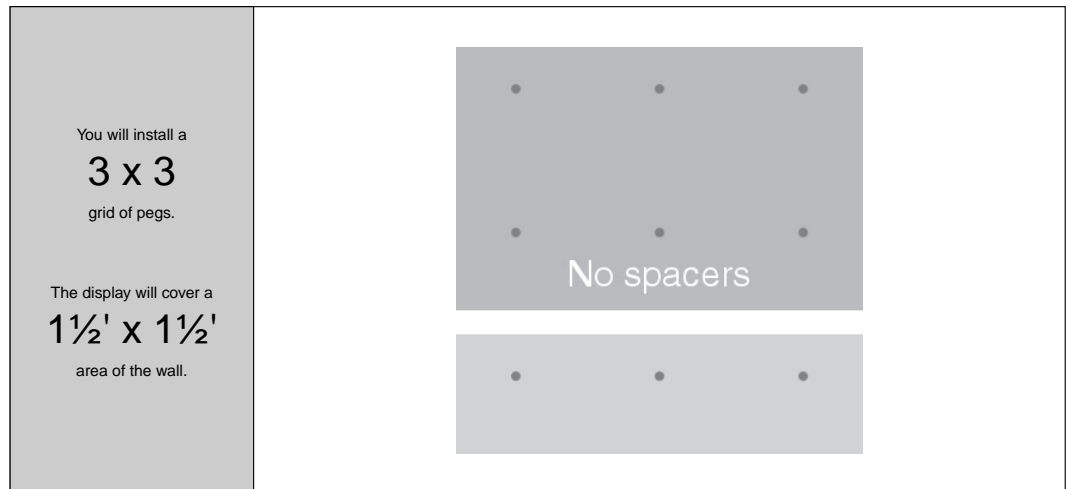
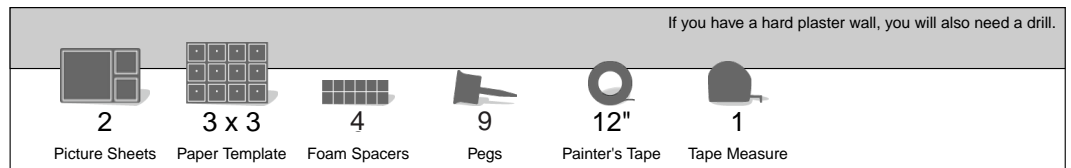
If you must use a hammer, cover the face with masking tape so it won't scuff the peg's finish. And tap gently.



If a peg ever gets loose, fill the hole with a bit of wood and re-insert the peg.

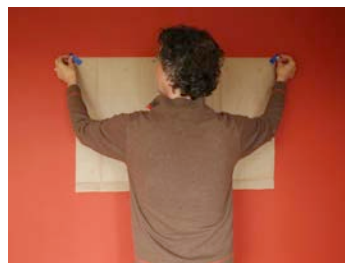
tips

1. Unpack the contents of your order and gather the tools you'll need:



Note: The foam spacers are only for the small 5x5, 5x11 and 5x17 panels.

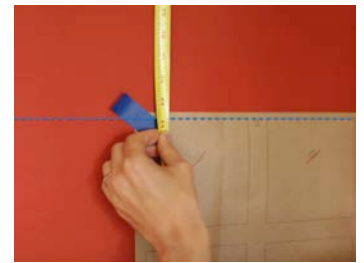
2. Preparing the paper template



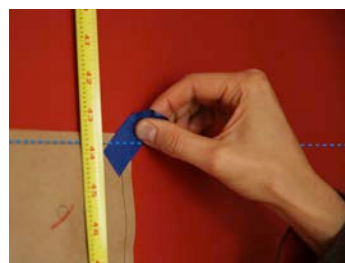
Affix tape to the top corners of the template and place it on the wall.



If you have a bubble level, use it to make sure the template is level. Otherwise use a tape measure and follow these steps.



On the left side, measure the distance to the ceiling using the tape measure.



On the right side, slide the template up or down to match. Once it's level, firmly tape the corner of the template to the wall.



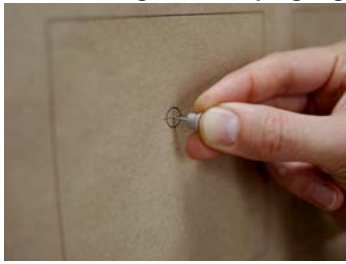
Exact spacing between the pegs is important, so make sure the template is stretched tight against the wall. Add tape to the bottom corners.



Take a break. Make sure this is really where you want the display. Now is a good time to a second opinion.

# Installing your display

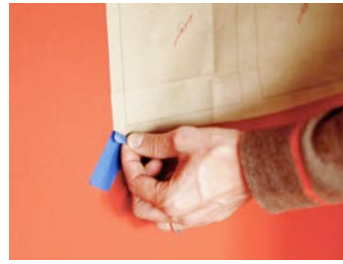
## 3. Marking where pegs go



Use a peg to make a small hole at the center of each cross-hairs.



Be precise and don't rush.



Carefully peel the tape from the wall and remove the paper template.



Fold and save the template in case you need to move or change the grid in the future.

## 4. Inserting the pegs



Go back and put a peg in each hole.



If you're straining to get pegs in, use a hard object like a wood spoon to give you more power.



When done, go back and check for crooked pegs which can cause problems later.



Push hard and they will go straight.

## 5. Hanging the pictures



Hold the protective back sheets by the corners and carefully peel off the pictures.



Center the picture on the pegs and -- while pushing it lightly against the pegs -- slide it down.



If the sockets don't catch, bend out the top flaps just a little. Don't bend them too far or the socket may not catch at all.



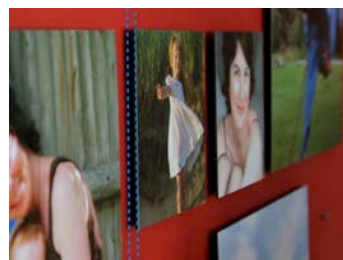
Hang the pictures, as a good reference you can start with the bigger ones, but there is no strict order to follow.



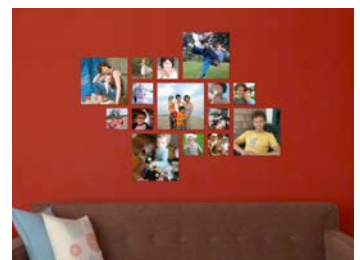
Add foam spacers to the small and narrow pictures before hanging them.



The spacers should be on the paper, four per picture.



Now they will hang parallel to the wall.



Done. Save the extra parts so you can later move the grid.